



SKYWALK

**EASY
TRIM
CHECK**

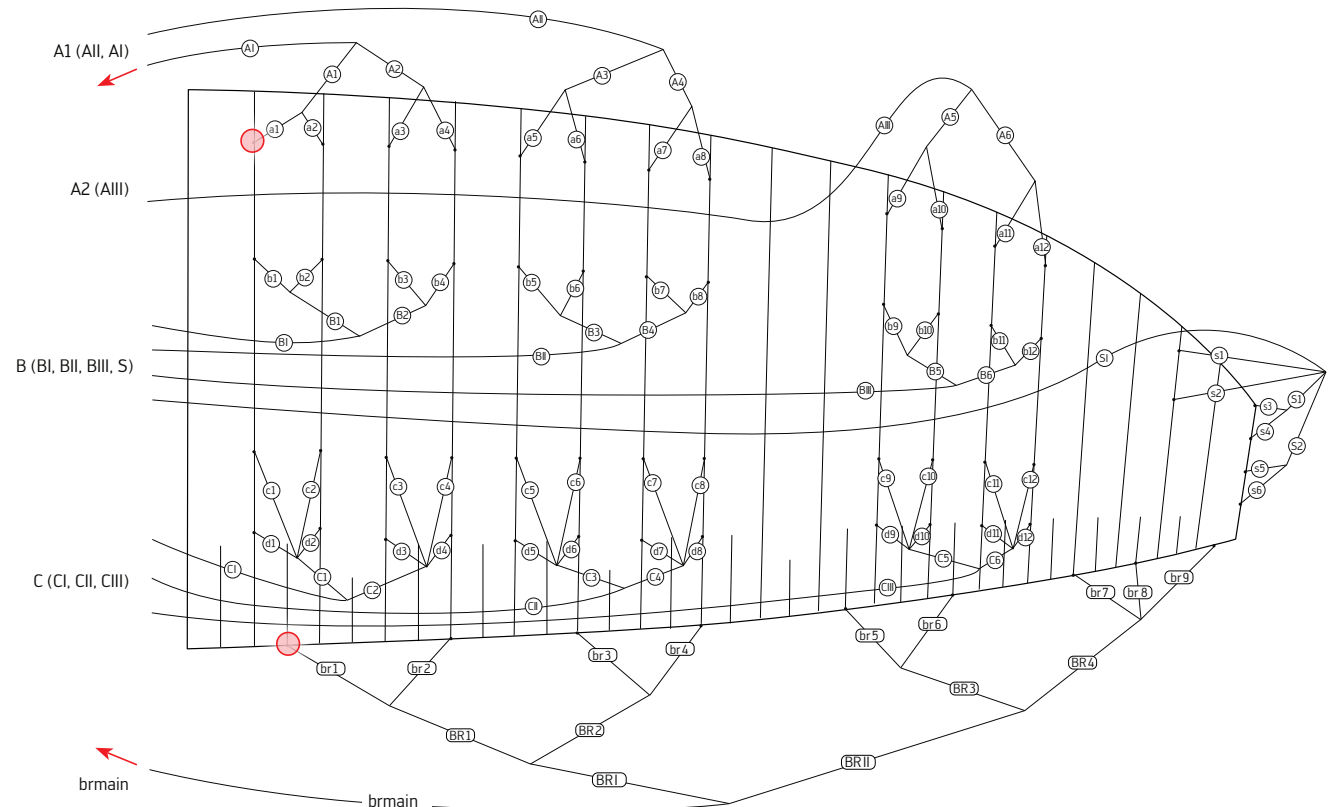
The Easy Trim Check - How and Why?

Brake lines are generally lightly loaded and can therefore shrink over time. In addition, mechanical stresses such as kinking, bending, abrasion, dirt and moisture contribute to shrinking.

The EASY TRIM CHECK is a simple method for every pilot to check the correct length of the brake lines of his glider without a measuring system.

Just follow these steps:

- Find the position of the innermost A-loops and the innermost loops of the brakes according to the line plan.



- A helper now holds the A-line together with the brake line firmly at the same height (measured until the end of the line. Loops and gathering system are not taken into account)



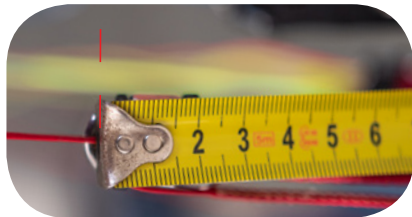
- Alternatively, if no helper is available, you can tie the loops together with a spare piece of line and attach the line to a fixed point (wall, floor, tree, etc.).



- Next, tighten the main line on the riser to which the A-line is attached. The same thing must be done with the brake line. Tighten the brake line on the knot in extension to the riser. Both lines must be tightened with the same load. 5 kg per line are sufficient.



- Hold a meterstick at the brake line knot. Measure the difference from the brake line node to the line shackle, where the corresponding A-line line is running and compare it with the nominal length.



measuring point



measuring point

- Alternatively, you can first mark the nominal length on the brake line and compare it with the A-line.



- A deviation of 2 - 3 cm is not critical. For larger differences, it is necessary to adjust the length of the brake line. The brake line knot must be tied as at the factory.



If you have any questions, please contact your personal skywalk dealer!