



Safety Notice

/ DROP

Safety notice frontcontainer DROP - regarding all sizes

During our regular quality control, it was found on the DROP frontcontainer that the connection line leading to the rescue handle did not have the required seam strength. Our internal limit is 70DaN, which was undershot during quality control.

Experience has shown that the lower strength of the seam in connection with the construction excludes tearing off during the opening process, but we as the manufacturer feel responsible for publishing this incident and taking further measures:



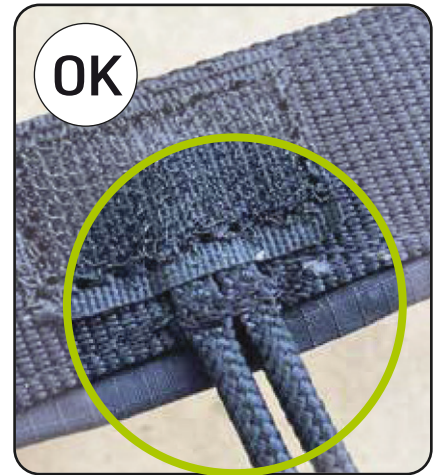
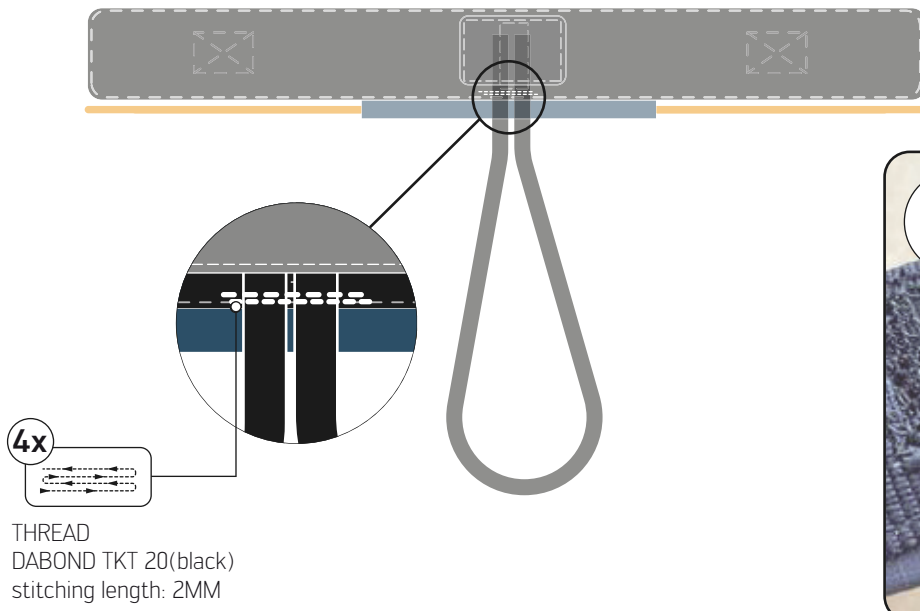
In order to rule out any safety risk, the DROP frontcontainer may only be used again after an additional fixing seam has been attached.

This seam can be applied at a skywalk authorized check center or skywalk directly. Please contact your dealer or importer for a quick revision. Alternatively, we can send you a revised rescue handle within the next two weeks.

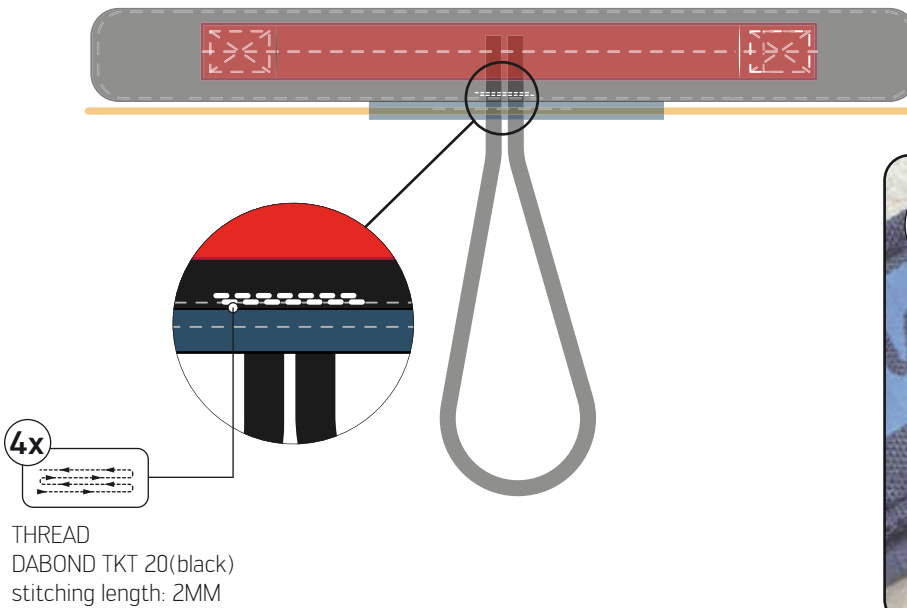
Please contact your skywalk dealer, importer or skywalk directly (support@skywalk.org).

Your skywalk team

BACKSIDE

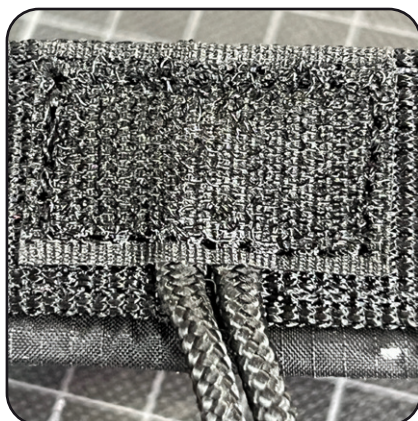


FRONTSIDE



BACKSIDE
BEFORE

without Rework



BACKSIDE
AFTERWARDS

with Rework

